

# MultiCon CMC-99

**NEW!**

- compact multichannel controller
- 48 analog inputs max.
- 8 current or 16 relay / SSR outputs max.
- 3,5" TFT display, 320 x 240 pixels
- touchscreen navigation



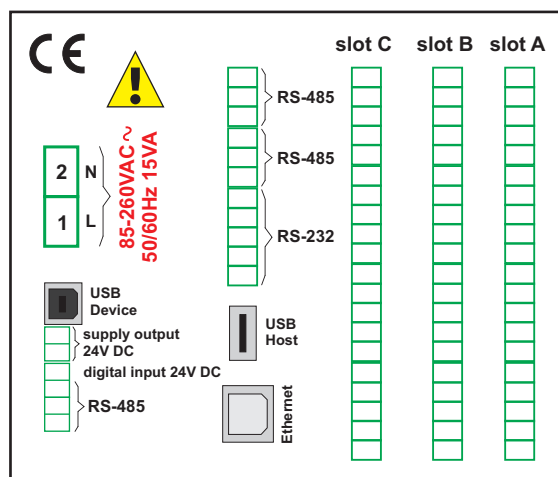
MultiCon CMC-99 are multichannel, compact, meter/controllers. Based on the LINUX operating system, they are ideal for applications where simultaneous measurement and control of multiple channels is required.

MultiCon CMC-99 can have up to 48 analogue inputs, 16 relay / SSR outputs and 8 0-20 mA analogue outputs. These controllers feature a backlit colour TFT display with touchscreen menu navigation. The built-in RS-485 interface with Modbus-RTU protocol offers standard communication features. There are also two USB ports available: Host for mouse or keyboard, and Device for PC communications.

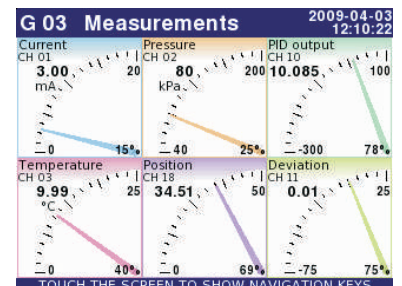
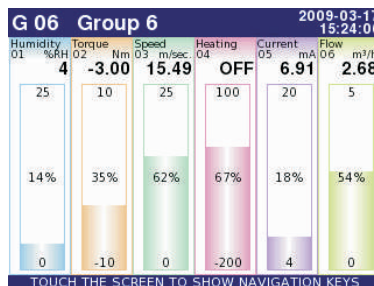
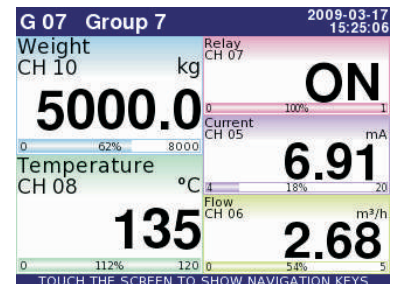
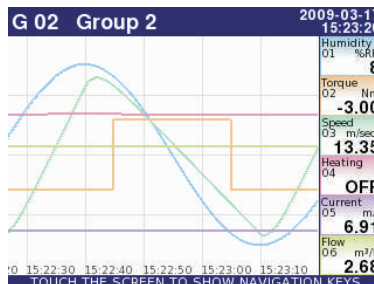
MultiCon CMC-99 is offered in two power supply versions: 230V or 24V AC/DC. An auxiliary 24V DC / 200mA supply output is available at the rear to power external sensors. Optional features include an enhanced communication module (Ethernet, second USB Host, two RS-485 and RS-232) and other types of inputs and outputs.

- 3.5" TFT display, 320 x 240 pixels,
- Linux operating system,
- control of multiple outputs from a single input value,
- control of outputs from logical combination of several inputs,
- direct connection of external sensors,
- direct connection of external actuators,
- PID process control,
- flexible display modes: numeric, bargraph, graph.

## Exemplary pin assignment



## An example of what the display looks like



## Technical data

**Power supply voltage:** 19V to 50V DC; 16V to 35V AC, or 85 to 260V AC/DC  
**Power consumption:** 15 VA typical; 20 VA max.

**Display:** 3.5" graphic TFT, 16-bit colour, 320 x 240 pixels, with touchscreen

**Measuring inputs:**

- 48 analogue inputs (0-20 mA or 0-10V) max.
- 12 universal inputs (V/I/RTD/TC/mV/R) max.
- 24 Thermocouple inputs max.
- 12 RTD inputs max.

**Digital input:** 1 x 24V DC, optocoupled

**Sensor supply:** 24 V DC ± 5% (200 mA max. for version with current inputs)

**Outputs:** 8 analog (0/4-20 mA) or 16 relay (1A/250V or 5A/250V) / SSR outputs max.

**Communication interface:**

standard: RS-485 (Modbus RTU), 1 x USB Host (on rear panel), USB Device  
enhanced version: 3 x RS-485/RS-232, 2 x USB Host, 1 x USB Device, 1 x Ethernet 10 MB

**Protection:**

standard version: a) IP 40, b) IP 42 (when fitted with STD-99 transparent door, see: optional accessories), c) IP 65 (front side when an additional frame is fitted);

version with front USB: a) IP 40, b) IP 42 (when fitted with STD-99 transparent door, see: optional accessories)

**Working temperature:** 0°C to +60°C

**Storage temperature:** -10°C to +70°C

**Case style:** panel mounting

**Case material:** NORYL - GFN2S E1

**Case dimensions:** 96 x 96 x 100 mm

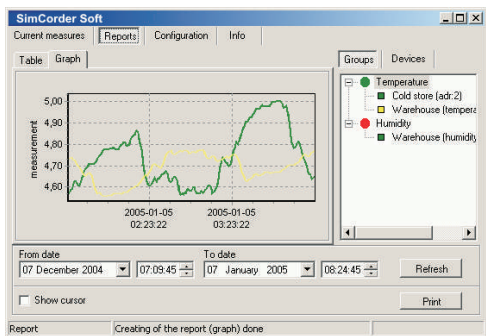
**Panel cut-out dimensions:** 90.5 x 90.5 mm

**Installation depth:** 102 mm min.

**Panel thickness:** 5 mm max.

Optional PC software

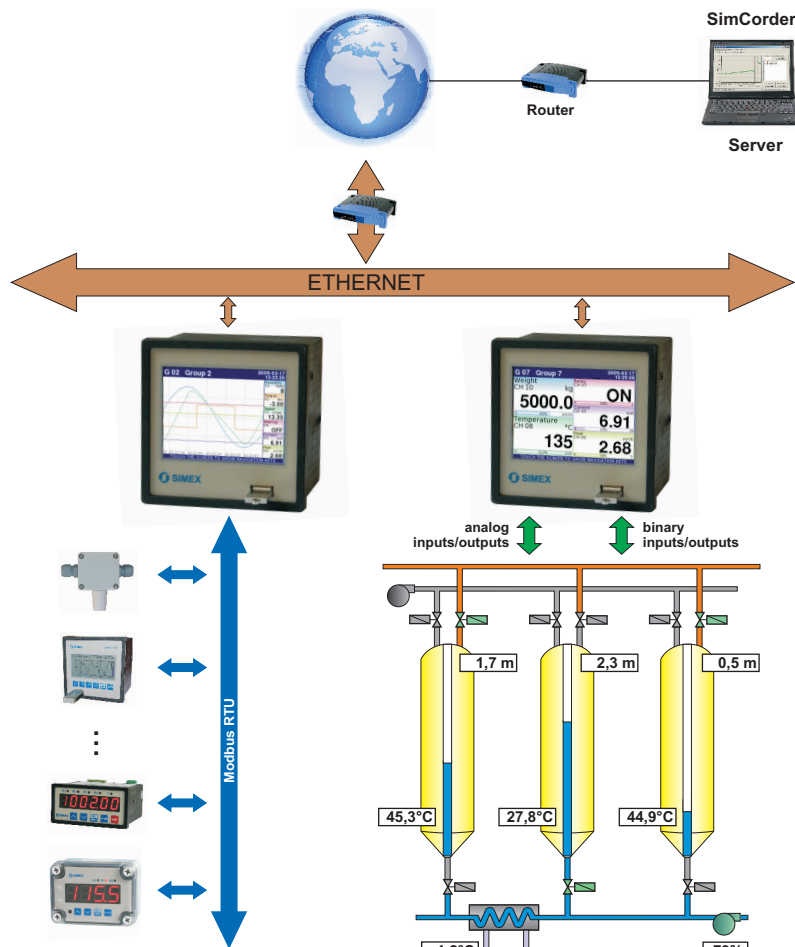
SimCorder



SimCorder software allows visualization, archiving and printing of recorded measurements. The whole measurement data is stored in special database on hard drive. Graphical presentation simplifies further analysis of the data. SimCorder has built in module for generation of alarms, what make managing of the processes easier for personnel. Software can operate as data server in LAN /WAN network.

Typical applications

- central temperature measurement and control system,
- multi zone heater controller,
- intermediate pumping station control system,
- spraying and heating control system for glasshouse.



Ordering (basic version)

MultiCon CMC-99-A/B/C-1-X-XX1

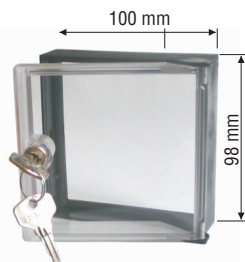
- options:**
- 00 : IP 40 (back USB Host)
  - 01 : IP 65 (back USB Host)
  - 0B : IP 40 (front USB Host)
  - 0C : IP 40 (2 x USB Host)
- power supply:**
- 3 : 19V ÷ 50V DC, 16V ÷ 35V AC
  - 4 : 85V ÷ 260V AC/DC

- slot A:**
- E
  - UI4
  - UI8
  - UI16
  - I16
  - RT4
  - TC4
  - TC8
  - UN4
- slot B:**
- E
  - UI4
  - UI8
  - UI16
  - I16
  - RT4
  - TC4
  - TC8
  - UN4
  - R81
- slot C:**
- E
  - UI4
  - UI8
  - UI16
  - I16
  - RT4
  - TC4
  - TC8
  - UN4
  - R81
  - R45
  - S8
  - S16

Specification:

- E : empty
- UI4 : 4 x voltage input + 4 x current input
- UI8 : 8 x voltage input + 8 x current input
- UI16 : 16 x voltage input
- I16 : 16 x current input
- RT4 : 4 x RTD input
- TC4 : 4 x TC input
- TC8 : 8 x TC input
- UN4 : 4 x universal input
- R81 : 8 x SPST relay 1A
- R45 : 4 x SPDT relay 5A
- S8 : 8 x SSR output
- S16 : 16 x SSR output

Optional accessories



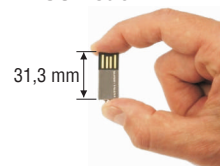
STD-99

Transparent door with moulded frame acc. to DIN 43700, lockable with security key. Door and frame are made by injection moulding thus assuring an exact fit, an optimal choice of a material which is very strong and with no risk of corrosion; perfect seal-protective system IP 42 acc. to DIN 40050 provided by all-round soft rubber sealing the moulding; due to the special door mountings, the door does not swing in or out sideways on opening; door-frame and front-frame can be exchanged. The ready-assembled units cannot be opened by unauthorised persons without using force or special equipment.

The mini USB memory stick is an ultra small flash drive offering up to 8GB data storage. Measuring just 31.3 x 12.4 mm, the mini USB drive is ideal for transporting data and fits inside the optional STD-99 lockable door.

- records up to 2 billion records,
- 30 MB/s (200x) max. data transfer rate,
- compatible with USB 2.0 and 1.1,
- durable solid-state storage - 10 years data retention,
- shock and water resistant, chromed steel housing,
- 1, 2, 4 and 8GB memory sticks available.

mini USB stick



Note: 1 GB is the recommended option for use with CMC-99.